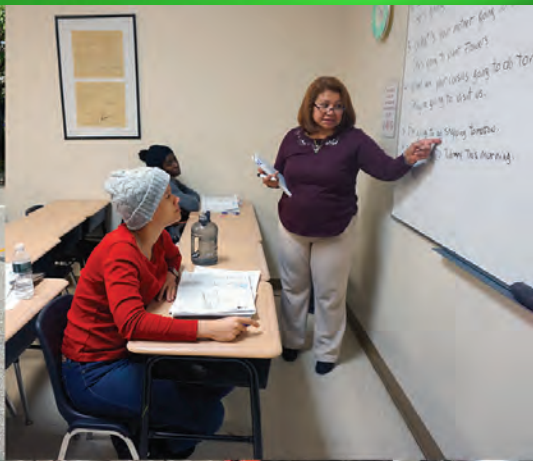


# UNDER ONE ROOF



## New Community Corporation Resource Guide

973-623-2800  
[newcommunity.org](http://newcommunity.org)

NEW      
COMMUNITY

## Education & Youth Services

973-242-7934

56-68 Hayes Street, Newark, NJ 07103

### Early Childhood Learning

NCC has two early childhood learning centers that serve children from 3 months to pre-K. NCC designed these centers to meet the needs of working parents and to provide education and activities to develop children's language, motor, social and intellectual skills.



### Community Hills Early Learning Center

973-621-0852

85 Irvine Turner Boulevard, Newark, NJ 07103

### Harmony House Early Learning Center

973-242-3115

278 Orange Avenue, Newark, NJ 07103



## Education & Youth Services Activities

**Charter School Basketball League** — NCC Youth Services, in collaboration with the New Jersey Education Consortium, provides students from Newark and surrounding cities with opportunities to learn and compete in a safe and nurturing environment. Students can participate in a mini basketball camp and tournaments that focus on the fundamentals of basketball and teaches the students valuable social skills such as teamwork, discipline and responsibility.

## Education & Youth Services Activities (cont'd)

### **Summer Camp** — NCC

Summer Camp offers an array of educational and enrichment activities for youth ages 5 to 13. Campers receive breakfast, lunch and a snack, and enjoy multi-site program activities such as computer classes, swimming, field trips and more.



### **Family Friendly Center and After School Programs**

The NCC Family Friendly Center and NCC After School Programs utilize a comprehensive approach in addressing the developmental needs of youth and the social service needs of their families. Students are given an opportunity to develop their talents and discover new interests, to advance academically and to explore life-enriching possibilities.

**Saturday Fun Club** — The program is designed to engage children ages 5 to 12 in stimulating and age appropriate recreational activities while providing a safe and nurturing environment during early morning hours on alternate Saturdays. The program also allows parents and guardians to run weekend errands while children are under adequate and qualified supervision.

**Project V.I.P.** — NCC's youth service learning initiative provides students with the opportunity to apply their own skills and interests to meet needs of residents through weekly community service.

**Teen Enrichment Network** — The T.E.N. program offers high school students a combination of learning integrated with employment experience for its participants. Its goal is to promote positive behavior, develop career awareness, increase job skills and foster career goals for inner city high school students.

**Young Men's Leadership Program** — YMLP is designed to promote responsibility, respect and resourcefulness for young males of high school age through adult leadership and commitment.

**The Positive Zone** — This program offers a Community Open Gym for ages 6 to 18 daily.

**Father/Daughter Dance and Special Family and Community Events** — These special events provide opportunities to build relationships between parents and children and also make lasting memories.

## **Msgr. William J. Linder Scholarship Fund**

**233 West Market Street, 2nd Floor**

**Newark, NJ 07103**

**973-497-4400**

The Monsignor William J. Linder Scholarship Fund provides much-needed financial support to enable students from low-income families to attend some of the finest Catholic high schools and private schools in the Northeast.

**To contribute to the scholarship fund, donate online at [newcommunity.org](http://newcommunity.org) or mail your check to 233 West Market Street, Newark, NJ 07103.**

### **Success Story: Scholar Gets Engineering Degree, Job with ExxonMobil**

Steed Amegbor, a Monsignor William J. Linder Scholar, has a successful career, thanks in part to the scholarship he received as a teenager. He moved to Newark knowing very little English and his family couldn't afford to send him to a private high school. With the Monsignor William J. Linder Scholarship, Amegbor attended St. Benedict's Prep School in Newark and excelled.

From there, he attended Stevens Institute of Technology in Hoboken where he completed a five-year program, earning his bachelor's degree in mechanical engineering. While finishing his degree at Stevens, Amegbor landed a job as a mechanical engineer for ExxonMobil in Beaumont, Texas. He relocated after graduation to start his career.





## Adult Learning Center

973-558-5536  
563 Orange Street, Newark, NJ 07107

NCC Adult Learning Center serves over 2,000 adult students (16 and older and out of the school system) per year with a comprehensive array of day, evening and Saturday educational programs in order to prepare them for a vocational or college education.

Educational services are provided in four sessions of nine weeks each and they include:

- English for Speakers of Other Languages (ESOL)
- Citizenship
- Adult Basic Education (ABE), Pre-High School Equivalency (Pre-HSE) and High School Equivalency (HSE) (English only)
- Computers for basic and intermediate levels

Other services:

- Workshops and seminars
- Health services
- Social services referrals
- Community development
- Dual enrollment vocational programs



# **New Community Career & Technical Institute (NCCTI)**

**973-824-6484**  
**274 South Orange Avenue, Newark, NJ 07103**  
**[newcommunitytech.edu](http://newcommunitytech.edu)**

New Community Career & Technical Institute is an accredited post-secondary school that offers comprehensive training in several disciplines. Additionally, it is a designated One Stop Center where individuals can conduct job searches utilizing the computer lab and resource center. The training rooms are prepped for various disciplines. Participants can also study for their high school equivalency test and take Adult Basic Skills education classes. Financial aid is available for eligible students.

## **Health Care Careers**

Three health care programs are available for students: Clinical Medical Assistant, Patient Care Technician and Community Healthcare Worker. Clinical Medical Assistant students learn to help doctors during examinations, keep medical equipment in order and maintain medical records. Patient Care Technician students learn to administer direct patient care and perform other duties under the direction of a supervising nurse. Community Healthcare Worker students are trained to be community health workers, who help connect patients to resources within their communities to improve their health.



## **Building Trades Specialist Program**

The Building Trades Specialist Program consists of four modules: Basic Carpentry, Basic Electricity, Basic Plumbing and an internship. Students gain knowledge in building trade techniques and equipment use as well as safety measures.



## **Culinary Arts Specialist Program**

As a program dedicated to the art of cooking, students are prepared for the food service industry and become proficient in various types of cuisine. Students learn to select and develop recipes; prepare, cook and serve meats, sauces, soups and vegetables; and understand food safety and sanitation.

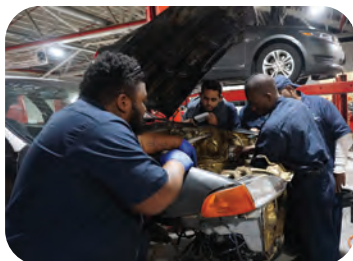


## NCCTI (cont'd)

### **Automotive Technician Program**

New Community has a fully-equipped automotive training center where students are trained as automotive technicians using the latest industry techniques.

After graduation, they are assisted in getting jobs at local car dealerships, auto repair shops and other businesses where technicians are in demand. Ford Motor Company has sponsored the program for over 20 years.



### **High School Equivalency Program**

Serving ages 16 to 24, students in the High School Equivalency Program gain literacy and math skills that lead to a high school diploma or equivalent, plus vocational training and entry level job placement.



## **Financial Opportunity Center** **973-824-6484**

New Community's Financial Opportunity Center helps low to moderate income individuals and families boost earnings, reduce expenses and make appropriate financial decisions that lead to asset building through an integrated service model approach. Students of New Community Career & Technical Institute programs are encouraged to take advantage of the services, which include employment services, financial coaching, job preparation, credit counseling, financial literacy and access to income support.



**New Community Federal Credit Union**  
**973-621-2363 or 973-621-5624**  
**274 South Orange Avenue, Newark, NJ 07103**  
**[newcommunityfcu.org](http://newcommunityfcu.org)**

The New Community Federal Credit Union is a Community Development Financial Institution. It is a low-income designated community development credit union (CDCU) founded with the specific mission of serving low to moderate income and minority communities beyond the reach of banks and mainstream credit unions. As a CDCU, it specializes in serving populations generally considered the hardest to reach, including low-income wage earners, recent immigrants and people with disabilities.

In-house, HUD certified counselors provide free counseling in:

- Foreclosure prevention
- First time home buyer education
- Credit repair
- Financial education and budgeting

**Hours of Operation:**

- 9 a.m. to 3 p.m. Monday to Friday

**Type of Accounts:**

- Savings
- Checking
- Christmas/Holiday Club
- Vacation Club
- Money Market
- Certificates of Deposits (CDs)

**Other Services:**

- Debit MasterCard and ATM cards
- Online banking at [www.newcommunityFCU.org](http://www.newcommunityFCU.org)
- Bill pay
- Direct deposit
- Money orders
- SSI direct deposit
- Life insurance provided to NCC employees who are active members

**Loans:\***

- |                          |                          |
|--------------------------|--------------------------|
| • Personal loans         | • Home improvement loans |
| • New and used car loans | • Mortgage loans         |
| • Emergency loans        |                          |

\*Eligibility and interest rates for loans are based on credit score, debt to income ratio, history with the credit union and other credit data. Loan payments can be made using payroll deduction or direct deposit. Fees are subject to change without notice.



# Harmony House

973-623-8555

278 South Orange Avenue, Newark NJ 07103

## Who We Serve

Harmony House opens its doors to homeless families who are in need of transitional housing and social services. The length of stay at Harmony House is determined by individual circumstances but the average ranges from six to nine months.



## Relocation and Case Management Services

With a host of on-site social services and the capacity to house 102 families in individual apartment units, Harmony House provides much more than shelter. Highly-skilled case managers provide much-needed resources to families by linking them to readily available social services.

## Relocation Services

Harmony House aids families in the relocation process with activities such as:

- Developing a relocation plan
- Conducting an apartment search
- Identifying needed support resources
- Qualifying for affordable housing
- Providing a continuum of care to promote housing stability

## Resident Requirements

In order to stay at Harmony House, families must:

- Commit to move from homelessness to self-sufficiency
- Adhere to program requirements
- Maintain a healthy lifestyle
- Keep apartments clean and safe
- Attend weekly home and life skills management workshops
- Develop goals to promote and prepare for a lifestyle change
- Participate in educational and job training programs

## Harmony House (cont'd)

### On-Site Social Services

- Transitional Housing
- Permanent Supportive Housing
- Intensive Case Management
- Relocation Housing services
- Referral for appropriate services as identified through Intensive Service Plans
- Domestic violence prevention and support
- Support group meetings that promote healthy lifestyle changes and address stress-related issues
- Meals program
- Substance abuse counseling (Referral to in-network partner)
- Mental health counseling (Referral to in-network partner)
- Good Housekeeping workshops
- Family counseling (Referral to in-network partner)
- Relapse prevention, support and counseling (Referral to in-network partner)
- Linkages to medical and dental services, clothing closet and other advocacy services as needed
- Employment Internet Cafe



### Services for Youth

Harmony House provides after-school and summer camp programs for children of families in transition. These program components include:

- EXCEL after school program
- Mentoring
- Fun and engaging social activities
- Annual holiday toy drive
- Community service projects
- Homework and tutoring assistance



Harmony House Early Learning Center - see page 2

## **Better Life**

**101 Fourteenth Avenue**  
**Newark, NJ 07103**

Better Life is New Community's newest building, which it built and currently manages. The first floor consists of the Better Life Engagement Center and Respite, run by Collaborative Support Programs of New Jersey (CSPNJ). The Engagement Center is open Monday through Friday from 9 a.m. to 5 p.m. and Saturday from 10 a.m. to 3 p.m. and welcomes any individual experiencing homelessness in the area. Staff members help visitors obtain documents like birth certificates and photo IDs, find permanent housing, search for jobs, write resumes and prepare for interviews with outfits and coaching. The facility also provides food, water, coffee and activities daily for visitors.



Better Life provides supportive housing studio apartments for chronically homeless individuals on the second floor of the property with CSPNJ providing supportive services for the residents. Residents are referred to the facility from the waitlist maintained by CSPNJ of prospects who meet the Tenant Selection Criteria. Rents are subsidized through Project Based Vouchers issued by the Newark Housing Authority.

## **Real Estate Development**

The NCC Department of Real Estate Development is driven by a desire to improve quality of life by creating affordable housing that rebuilds communities and recreates stable neighborhoods. The department enhances neighborhoods by emphasizing a holistic approach to development that never loses focus of a community's needs or vision.



The Department of Real Estate Development has been active from the beginning of NCC and is well-versed in the development process, including financing and construction of facilities that create strength for communities.

NCC has renovated 842 units at four of its Newark properties: Commons, Douglas, Gardens and Roseville. The project updated and preserved NCC's affordable housing.

Many energy-saving measures are being instituted at NCC's residential properties. The improvements include the installation of high efficiency boilers, hot water heaters, boiler controls, ventilation systems, variable speed pumps, insulation and weather stripping. These improvements will save thousands, lower our carbon footprint and ensure residents' comfort for years to come. Funding is provided by federal, state and PSE&G grants and loans.

# New Community Mid-Rise Housing and Townhomes for Families in Newark

## Roseville Commons

973-744-5410

553-567 Orange Street, Newark, NJ 07107

Roseville Commons is a 50-unit mid-rise complex that is situated close to St. Rose of Lima Church and the Orange Street shopping corridor. The Adult Learning Center is located on the ground floor of the complex operated by New Community Corporation. Additional space for community activities is also available on the ground floor.



## Commons Family

973-623-6870

220 Bruce Street, Newark, NJ 07103

Commons Family includes 149 housing units at scattered locations along Jones Street, 14th Avenue, 15th Avenue, Newton Street, Hunterdon Street and Bruce Street. The rooms in the units are spacious and some are wheelchair accessible apartments. The units are connected by walkways and landscaped grounds. Other amenities include laundry, parking and a playground nearby for residents' children.



## Estates

973-623-7280

14th Avenue, Newark, NJ 07103

Estates has 56 garden style two-story townhouses. The townhouses are connected by walkways and landscaped grounds. Some townhouses are wheelchair accessible. The property is near shopping centers, schools and major thoroughfares such as South Orange Avenue and Springfield Avenue. Amenities include off-street parking and play equipment for residents' children.





## New Community Mid-Rise Housing and Townhomes for Families in Newark (cont'd)

### Gardens Family

973-623-6945

Bruce and Bedford Streets, Newark, NJ 07103

Gardens Family contains 73 one- and two-story townhouses. The location is within a half mile radius of downtown and Rutgers-Newark. The townhouses are connected by walkways and landscaped grounds. Other amenities include off-street parking and a playground nearby for residents' children.



### Manor Family

973-623-6377 or 973-639-7851

72 Hayes Street, Newark, NJ 07103

225 Hunterdon Street, Newark, NJ 07103

Manor Family includes L-shaped four-story mid-rises and several other townhouses scattered nearby. The property has benefited from a major renovation project on all units that has beautified and rejuvenated the development. Amenities include on-site parking and laundry room. It is easily accessible to shopping centers, New Horizons Community Charter School and playgrounds. Manor Family contains a total of 173 units.

### Sussex

973-623-7280

78 North 6th Street, Newark, NJ 07107

Sussex is a four-story, 31-unit mid-rise apartment building conveniently located to downtown Newark and with easy access to Route 280, area shopping and schools.

### Community Hills

85 Irvine Turner Boulevard  
Newark, NJ 07103

This property was NCC's first homeownership development and it provides affordable homeownership opportunities in the heart of Newark's Central Ward.



## New Community Mid-Rise Housing and Townhomes for Families in Newark (cont'd)

### **NCC Bergen Estates**

237-249 Bergen Street, Newark, NJ 07103

These homes include two- or three-bedroom townhouses owned as condominiums. The property was NCC's second homeownership development. It includes 11 duplex units and the target purchaser was a first-time homebuyer who would occupy one level and rent the other to a low-income renter family. It was designed to provide affordable homeownership opportunities and low-income rental options. The entire site is fenced and landscaped. It is near major transportation, shopping centers and schools.

## New Community Homes for Seniors

New Community provides homes for seniors and disabled residents that are centrally located near University Hospital, NCC Health Care Complex, Newark Public Library, supermarkets, main Post Office Branch, Federal Building, Social Security office, the Home Depot, public transportation and shopping centers. NCC housing is subject to HUD eligibility standards and Fair Housing regulations.

### **Associates**

973-623-6872

180 South Orange Avenue, Newark, NJ 07103

Associates is a 15-story, 225-unit high-rise with two elevators, carpeted hallways, intercom/CCTV system, laundry room, community room, on-site physician services, parking, on-site Resident Services Coordinator and 24-hour security.

### **Commons Senior**

973-623-6870

140 South Orange Avenue, Newark, NJ 07103

Commons Senior is a newly renovated 18-story high-rise boasting 221 apartments. It has two elevators, carpeted hallways, intercom/CCTV system, laundry room, parking, an on-site Resident Services Coordinator and 24-hour security.

## New Community Homes for Seniors (cont'd)

### **Douglas Homes**

973-623-6871

15 Hill Street, Newark, NJ 07102

Douglas Homes is a 15-story development located in the downtown area of Newark. Included in the building of 135 apartments are two elevators, carpeted hallways, sitting garden, parking, intercom/CCTV system, laundry room, community room, on-site Resident Services Coordinator and 24-hour security.



### **Gardens Senior**

973-623-6945

265 Morris Avenue, Newark, NJ 07103

Gardens Senior is an 11-story development with 160 apartments and a community room. It has two elevators, carpeted hallways, laundry, intercom/CCTV system, on-site parking, an on-site Resident Services Coordinator and 24-hour security.



### **Manor Senior**

973-484-2316

545 Orange Street, Newark, NJ 07107

Manor Senior is a 10-story high-rise of 154 apartments that features on-site physician services, two elevators, intercom/CCTV system, on-site parking, laundry room, community room, an on-site Resident Services Coordinator and 24-hour security.



### **Roseville Senior**

973-482-5766

1 South Eighth Street, Newark, NJ 07107

Roseville Senior is a four-story, mid-rise building with 100 apartments. Included are two elevators, on-site parking, a community room, on-site Resident Services Coordinator, laundry room and 24-hour security.



### **Orange Senior**

973-674-2541

132 William Street, Orange, NJ 07050

Orange Senior is a six-story complex of 100 apartments featuring on-site physician services, a community room, two elevators, laundry room, parking, on-site Resident Services Coordinator and 24-hour security.

### **Hudson Senior**

201-985-1156

21-27 Orchard Street, Jersey City, NJ 07305

Hudson Senior is an eight-story building that includes 80 apartments, a community room, two elevators, on-site Resident Services Coordinator, parking, laundry room and 24-hour security.

## **Other Owned Properties**

### **Roseville Towers**

200 South Orange Avenue, Newark, NJ 07103

This property is owned by New Community and leased to The Leaguers, Inc. for its Headstart/Early Head Start Program. NCC's Property Management Department is also located at this location.

### **LEAD Charter School**

201 Bergen Street, Newark, NJ 07103

New Community owns the building at 201 Bergen Street and currently leases it to LEAD Charter School, a high school that enrolls students between the ages of 16 and 21.



## Economic Development

973-623-2800

Dedicated to promoting economic self-sufficiency for the local community, NCC understands that community development is a powerful economic engine to improve quality of life. Whether it's our job training programs or our popular special events venue at St. Joseph Plaza, NCC's comprehensive facilities and programs have made the organization a global model for social enterprise and community development.

New Community is still attracting visitors from throughout the world who come to tour our facilities and receive advice on how they can replicate our success in neighborhoods within their own communities.

### Chelsea-Warren Construction



Chelsea-Warren Construction is an NCC subsidiary that manages New Community construction projects. Chelsea has more than 20 years of construction management experience. It has served as the general manager during the construction phase of many NCC housing developments, including high-rise apartment buildings for seniors, family townhouses and single family homes. Chelsea played a key

role in providing project management service for the multi-million dollar housing rehabilitation of the Manor properties in Newark, which resulted in major home improvements for more than 500 low-income residents. It was most recently involved in rehabilitating four Newark properties: Commons, Douglas Homes, Gardens and Roseville. As the properties age, Chelsea is involved in renovation and rehabilitation to give them new life as affordable housing.

**Garden State Affordable Housing** is a tax credit fund that provides equity investments for construction of affordable housing in New Jersey. It processed over \$70 million in tax credits invested in numerous projects around New Jersey, including New Community.

## Extended Care Facility

973-624-2020

266 South Orange Avenue

Newark, NJ 07103

[newarknursinghome.org](http://newarknursinghome.org)



New Community Extended Care Facility is a skilled/long-term care nursing facility with 180 beds that is staffed by doctors and nurses. It received a five-star rating in Quality Measures from Medicare.gov. Offerings include:

- All-inclusive nursing services
- Geriatric physicians
- 30-bed subacute care center
- Flat screen TVs and cable channels in each room
- Physical, occupational and speech therapy
- Hospice care
- Special nutritional diet

The 30-bed subacute care unit provides short-term medical, rehabilitation and nursing services to individuals who have been released from the hospital but who are not yet ready to return to their home in the community.

### Rehabilitation Therapy

Our comprehensive medical rehabilitation program offers patients physical, occupational and speech therapies. Our rehabilitation department consists of highly qualified therapists with years of rehabilitation experience. Additionally, our state-of-the-art rehabilitation gym is equipped with the latest in rehabilitation equipment.



### Dementia and Alzheimer's Services

The Alzheimer's and dementia services at New Community Extended Care Facility provide personalized, highly interactive activities catered to the functional level of each resident. Each day is filled with stimulating activities involving music and crafts or games like ring toss, as well as therapeutic activities including massages. Lunch and dinner are served to residents and staff members oversee the administration of medications.

# Family Service Bureau of Newark

**Newark Office**  
**274 South Orange Avenue**  
**Newark, NJ 07103**  
**973-412-2056**

**Kearny Office**  
**379 Kearny Avenue**  
**Kearny, NJ 07032**  
**201-246-8077**



Family Service Bureau of Newark (FSB) provides a vast array of comprehensive services in Essex and West Hudson counties. FSB is staffed by culturally diverse clinicians and other mental health professionals.

## **Division of Child Protection and Permanency Referrals**

- Contracted services for parenting group; anger management group; and individual, couple and family counseling

## **Substance Use Disorder**

- Intensive outpatient
- Outpatient
- Co-occurring disorders
- Psychiatric services with medication monitoring services

## **Mental Health Outpatient**

- One-on-one therapy for individuals, couples and families
- Psychiatric services with medication monitoring services
- Anger management for children and adults

## **FCIU – Family Crises Intervention Unit**

- Provides brief counseling to children in the Newark school system and/or at FSB for six to eight weeks

## **Domestic Violence**

- Individual and group counseling

## Supportive Assistance to Individuals and Families (SAIF)

274 South Orange Avenue, 4th Floor  
Newark, NJ 07103

SAIF was developed to create a safety net for those families and individuals who exhausted their five-year time limit on welfare and do not meet the criteria for an exemption to the time limit. The SAIF program couples intensive case management with a continuation of the service package available to WorkFirst NJ recipients. This means that if the client continues to work or participate in a work activity, he or she may receive up to 24 months of cash benefits, plus services such as child care and transportation. If needed, other services such as mental health and substance abuse treatment may also be available. A case manager keeps in close contact with the client — through phone calls, visits to the office and even visits to the client's worksite or home — to ensure that progress continues.





## Resident Services

973-623-6114

220 Bruce Street, Newark, NJ 07103



The Resident Services Department interacts closely with NCC's family and senior housing units. In all NCC senior housing facilities, there is a Resident Services office staffed by a Resident Services Coordinator. Health clinics staffed by a physician and nurse are located on-site in several of the Newark senior buildings, as well as the one in Orange. Services include:

**Emergency Food Pantry** — New Community operates an emergency food pantry starting the first business day after the 15th of every month to aid individuals and families who are in need of food supplies. In addition to canned goods, the pantry also provides items such as rice, cereal and even frozen, whole chickens. A valid NJ ID and/or proof of residency, proof of income (employment, unemployment, Social Security award letter, etc.) and a birth certificate for each child under the age of 18 are required.

**Referrals for Basic Needs** — Residents receive referrals to acquire necessities such as food, clothing, shelter and health care within the NCC network or other locations.

**Transportation** — Resident Services provides transportation for seniors and families living in NCC residences. The residents are taken on trips to restaurants, museums, shopping centers and special events.

**Holiday Needs** — Resident Services collects toys, helps supply holiday meals and provides Christmas gifts to NCC families in need.

**Residential Social Services** — The Resident Services Department assigns Resident Services Coordinators to all NCC housing developments. NCC's Resident Services Coordinators work closely with families and children to foster a pleasant living environment.

**Workshops** — Residents participate in educational workshops on topics that are important to them, such as fall prevention, proper nutrition and more.

## Home Friend Program

973-286-5492

The Home Friend program is designed for seniors who need extra help with their daily living needs. Seniors must be 60+ years residing in Newark's Central Ward and have Medicare only to be eligible for this program.

## **New Community Arts**

**Monsignor William J. Linder Plaza**

**233 West Market Street, Newark, NJ 07103**

**973-242-8012**

New Community conducts a series of artistic and cultural enrichment events throughout the year, including:

- Live music on Friday nights
- Black History Month celebrations
- Women's History Month celebrations
- Hispanic Heritage Month celebrations
- Other live entertainment

## **Rental Space**

**Monsignor William J. Linder Plaza**

**973-623-2800**

Monsignor William J. Linder Plaza serves as the headquarters of New Community Corporation and is also an event space for the community. It has a serene atmosphere featuring the original ecclesiastical architecture and stained glass windows of the refurbished historic church. Rentals are available to the public for wedding receptions, business meetings, repasts, corporate events and other private events.



# Connect with New Community

**Check us out online: [newcommunity.org](https://newcommunity.org)**

**Follow us on social media:**



NewCommunityCorporation



@NewCommunityCor



@newcommunitycorp



NewCommunityNewark



New Community Corporation

**Support us by making an online donation  
at [newcommunity.org](https://newcommunity.org)**

# New Community Family Resource Success Center

## A Family Success Center

274 South Orange Avenue  
Newark, NJ 07103  
973-565-9500



The New Community Family Resource Success Center takes a strengths-based, holistic approach to service delivery by linking those seeking assistance with information, referral resources and educational opportunities designed to empower and improve the quality of their lives.

The Family Resource Success Center serves as an information and referral source

for services offered by NCC as listed within this guide. Additionally, the Family Resource Success Center links visitors to services available through local, state and federal government agencies, as well as non-governmental, nonprofit and other social service agencies.

The Family Resource Success Center provides many on-site services and also hosts external service providers to deliver presentations to center visitors about the resources they provide in the community. Services include financial literacy, benefit screening, SNAP (food stamps), energy and water assistance, lead abatement, homelessness assistance and prevention, rental assistance, substance abuse services, health care, prescription drug programs, prenatal programs, free tax prep and advocacy, among many others.

## New Community Mission

To help residents of inner cities improve the quality of their lives to reflect individual God-given dignity and personal achievement.

## New Community Corporation Headquarters

Monsignor William J. Linder Plaza  
233 West Market Street, 2nd Floor  
Newark, New Jersey 07103  
973-623-2800

Give online and support our cause at [newcommunity.org](http://newcommunity.org)