

# NEW

# COMMUNITY

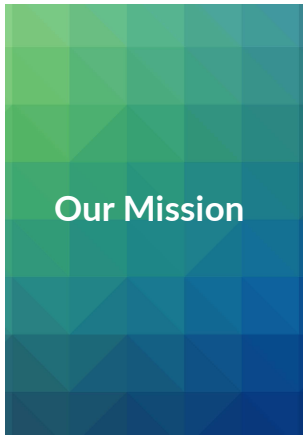
**VISION**

**DIGNITY**

**ACHIEVEMENT**

---

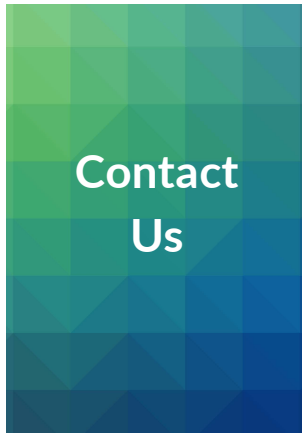
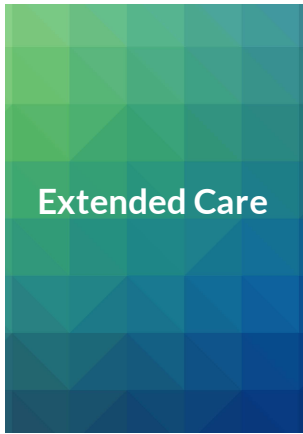
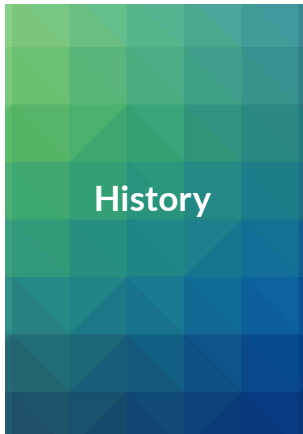
**New Community Corporation is one of the largest community development corporations in the country. Our mission is to help residents of inner cities improve the quality of their lives to reflect individual God-given dignity and personal achievement.**



NEW      
COMMUNITY

# MEDIA KIT TABLE OF CONTENTS

---





## MISSION

To help residents of inner cities improve the quality of their lives to reflect individual God-given dignity and personal achievement.

## IMPACT

As one of the largest and most comprehensive community development corporations in the United States, New Community's success rests on its comprehensive approach to community development. It is active in housing, health care, education, training, childcare and economic development. In addition, New Community produces a community newsletter, arts programs and a federally-insured credit union. It has provided training to community development professionals from around the country and the world, having hosted representatives from more than 20 countries.

NCC fits into the bigger universe of 1.6 million American nonprofits and 4,000 CDCs, which have a total annual revenue of \$621.4 billion and employ 10.2 percent of the total labor force. The CDC movement has been a major force in the redevelopment and rebuilding of inner-city neighborhoods and has succeeded in developing low-income areas.

## BEST IN CLASS

New Community is recognized as:

- One of the largest and most comprehensive community development corporations (CDCs) in the United States.
- A large-scale deliverer of comprehensive programs and services.
- A leader in affordable housing and economic development.
- A model among nonprofit, social entrepreneurship and CDC communities.
- Having beneficial partnerships on the local, national and global levels.



## HISTORY

The disorders that preceded the creation of New Community Corporation (NCC) left 23 dead, more than 1,000 injured, nearly 1,600 arrested and \$15 million worth of property in ruins. The real toll was far deeper. The disorders were a disaster that threatened lives and homes and ripped apart the very fabric of the community.

Shopkeepers fled, most never to return. Residents were left without essential services. There were no homes, no jobs and no hope. The Central Ward of 1967 bore a closer resemblance to the bombed-out cities of Europe after World War II than to the largest city in New Jersey.

### NEIGHBORHOODS LEFT IN RUINS

Damaged by white flight to the suburbs for decades, Newark had hit the bottom. Much of the Central Ward lay in ruins and its residents, mostly poor minorities, desperately needed housing, employment and social services.

Incumbents in Newark's City Hall showed little interest in neighborhood problems. Little of the federal anti-poverty money directed to Newark filtered down to benefit the poor.

The 1967 disturbances laid bare the pressing needs and outrages of life in Newark, a city without many of the most basic resources and services taken for granted in most urban centers.

Huge numbers of people desperately needed work, but there were few jobs. There were growing numbers of young families, but daycare was virtually nonexistent and parents had no place to leave their children.

Hospitals were strained by a crush of patients and health care was difficult to obtain. Decent, affordable housing was virtually impossible to come by.

New Community was born in 1968 from disorder, poverty and despair. The organization, founded by Father William J. Linder and a dedicated group of associates that met at Queen of Angels Church, where he was a young parish priest, had no money and no political influence. It faced overwhelming odds against success.

The original NCC Board of Directors included Willie Wright, President; Timothy Still, Vice President; Elma Bateman, Secretary; Arthur J. Bray; Monsignor Thomas J. Carey; Joseph Chaneyfield; Robert Curvin; Kenneth Gibson; and Father Linder.



Their goal was simple and bold: to develop safe, decent and attractive housing for poor residents in a new community within the Central Ward. They sought to use the new housing to spur neighborhood revitalization. To promote interest and pride, they developed a process for community participation in developing the new housing, including actively involving residents in the design process.

They proposed developing a 45-acre tract — South Orange Avenue to the north, 15th Avenue to the south, Jones Street (now Irvine Turner Boulevard) to the east and Bergen Street to the west — covering 14 city blocks in the heart of the Central Ward.

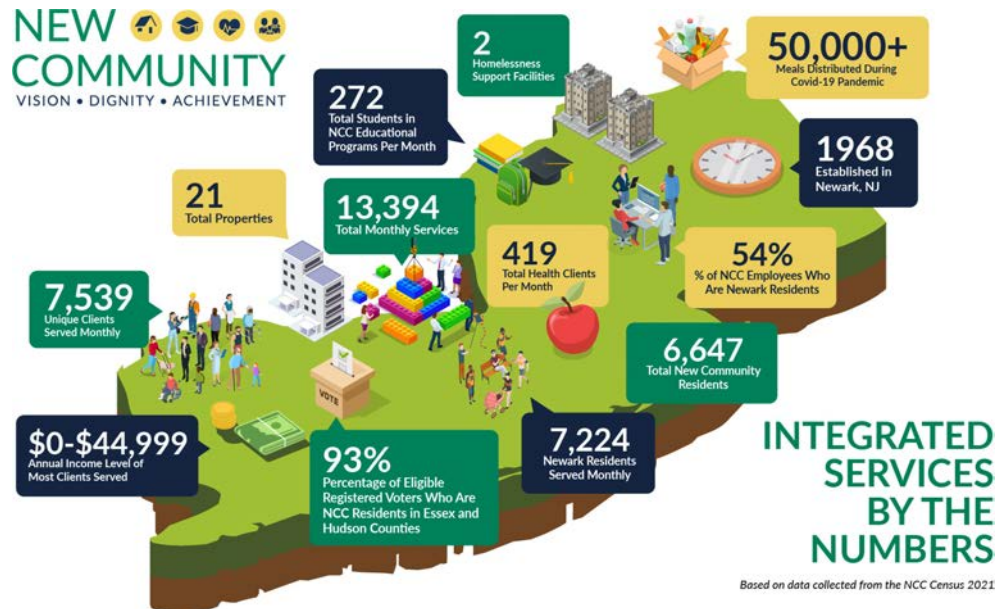
NCC began by purchasing two acres of land. The Board envisioned the development of this land as a small beginning, which would have a significant impact. "The two acres — and from them the entire 45 — will stand as a symbol of a community that rebuilt itself physically and spiritually," the Board wrote at the time.

The early days brought severe challenges. There were numerous confrontations with black nationalists and activists who were acquiring a large local following. White conservatives, who were anxious to block political or economic gains by Blacks, objected to NCC's efforts to improve life in the Central Ward and to its visible attempts to oppose their racially inflammatory tactics.

There were few models for the kind of resident-led community development NCC was trying to achieve. It took years of struggle to develop housing plans that would be approved by state and federal authorities, to secure financing for construction and to cultivate skills members would need to undertake the complex task of housing development.







New Community Corporation offers a myriad of services for individuals of all ages in its mission to help residents of inner cities improve the quality of their lives to reflect individual God-given dignity and personal achievement. NCC is uniquely equipped to integrate services to best help individuals and families.

- **Education & Youth Services**
  - After school programs
  - Summer camp
- **Adult Learning Center**
- **New Community Career & Technical Institute (NCCTI)**
- **Financial Opportunity Center**
- **New Community Federal Credit Union**
- **Harmony House: Transitional housing for homeless families**
  - Relocation and case management services
  - Domestic violence prevention and support
- **Better Life:**  
Partnership with Collaborative Support Programs of New Jersey (CSPNJ) providing services for homeless individuals
- **Real Estate Development**
- **Housing for individuals, families, senior citizens and the disabled**
- **Extended Care Facility (skilled nursing facility)**
  - Rehabilitation therapy
  - Dementia and Alzheimer's services
- **Family Service Bureau**
  - Substance abuse counseling
  - Mental health counseling
  - Division of Child Protection and Permanency referrals
  - Psychiatric services with medication monitoring services
  - Family Crisis Intervention Unit (FCIU)
  - Individual and group counseling
- **Circle of Life:**  
Helps children and families cope with stressors associated with caring for a child with a disability and provides grief counseling to individuals and families experiencing the loss of a child.



## INTEGRATED SERVICES

NCC offers more than just a roof over the heads of the people living in its more than 1,800 housing units. Resident Services staff members connect individuals and families to appropriate services, including the Emergency Food Pantry, the Family Resource Success Center and Family Service Bureau (FSB). Staff members also inform residents in need about New Community Extended Care Facility, where they can go for short-term rehabilitation or long-term stays.

Opportunities to further residents' education are also available. New Community Career & Technical Institute (NCCTI) offers training and nationally recognized credentials so graduates can obtain living wage jobs in in-demand sectors. The school also offers a High School Equivalency program for those ages 16 to 24 and a Financial Opportunity Center to help students and the community at large improve their credit scores and budget for future purchases.

The Adult Learning Center provides several programs for those ages 16 and older, including High School Equivalency and English for Speakers of Other Languages. Some students who obtain their high school diploma at the Adult Learning Center go on to NCCTI for certification training.

The Family Resource Success Center serves as an information and referral hub for NCC's services. Individuals can visit the center and learn more about the programs available to them. Personnel refer people for many NCC services, including housing, financial counseling, training, health services and mental health counseling.

NCC's Health and Human Services department provides integrated behavioral health care through FSB to individuals and families in order to nurture and improve their social, emotional and physical wellbeing, and to aid them in overcoming barriers to achieving self-sufficiency in all aspects of life. It aims to provide holistic care that includes both direct service and collaborative work with many partners.

Residents of Harmony House, NCC's transitional housing facility for homeless families, are evaluated by staff members of FSB and can receive counseling at the mental health agency which is located right next door. Supportive Assistance for Individuals and Families (SAIF), which provides intensive case management to those reaching their limit for public assistance, is also available. The Youth Services Department offers a free after-school program for children at Harmony House and also welcomes them for summer camp.

The Health and Human Services Department works closely with Rutgers to provide primary health care services to residents, in addition to referring individuals to FSB for mental health services. The department also works with Collaborative Support Programs of New Jersey (CSPNJ) to ensure guests of Better Life, who are homeless, receive necessary services.

NCC provides child care options that residents can utilize. Many Harmony House families send their children to Harmony House Early Learning Center, which cares for infants and toddlers and prepares students for kindergarten. NCC also offers Community Hills Early Learning Center. Both centers work with The Leaguers, Inc. to participate in the Head Start Early Learning Program.



# REAL ESTATE DEVELOPMENT

NCC is New Jersey's largest nonprofit developer of housing and has more than 45 years of experience in developing, selling and managing affordable housing. While today's NCC is an all-inclusive provider of services to the community, NCC had its beginnings in providing quality housing to low-income families and seniors in desperate need. The first development activities focused on housing because the community stated housing as the greatest need.

NCC's first housing development opened in 1975. Today, NCC manages more than 1,800 units of housing as well as other community facilities that are home to more than 6,600 residents. The residential developments include rentals for individuals, families, senior citizens and the disabled.

The most recently completed development is Better Life, which began serving members of the community in 2018 and has three distinct offerings. The Better Life Engagement Center welcomes any individual experiencing homelessness. Staff members help visitors obtain documents, find permanent housing, search for jobs, write resumes and prepare for interviews. Essex County Wellness Respite Services is available for individuals in crisis who have mental health or substance abuse issues. The program offers 10-day stays in private bedrooms and teaches guests skills to cope with their issues. The second floor of Better Life provides supportive housing units for chronically homeless individuals.

NCC is pursuing a new initiative to build and sell two- and three-family homes to first-time home buyers.

These activities will help fight the problem of gentrification which is threatening the ability to provide affordable housing in neighborhoods.

New Community Corporation's Department of Real Estate Development is driven by the mission of NCC to improve the quality of life of the residents served by creating affordable housing that rebuilds communities and re-creates stable neighborhoods.

The Department of Real Estate Development enhances neighborhoods by emphasizing a holistic approach to development that never loses focus of a community's needs or vision. The department has been active since the inception of NCC and has a staff well-versed in the development process, including both the financing and construction of facilities that create strength for communities. Some of the construction is managed and performed by NCC's Environmental Services Department.

Many energy-saving measures are being instituted at NCC's residential and commercial properties. The improvements include the installation of high-efficiency boilers, hot water heaters, boiler controls, ventilation systems, variable speed pumps, insulation and weather stripping. These improvements will save thousands, lower NCC's carbon footprint and ensure residents' comfort for years to come. NCC is pursuing a number of solar project initiatives which will also reduce costs as well as our carbon footprint. Funding is provided by federal, state and PSEG grants and loans.



# HEALTH & HOUSING



Safe and stable housing is arguably the most important social determinant of health. Without a roof over one's head and the security of knowing that one's accommodations are a permanent home rather than a temporary or uncertain shelter, chances of stable employment, educational advancement, proper self-care, healthy relationships and the upkeep of most other determinants of health rapidly crumble. However, despite housing's foundational nature, health and housing cannot be addressed in isolation.

The intersection of health and housing provides a useful lens through which to view pathways to better health outcomes and strategies for creating more effective policies and programs, but rarely is the solution as simple as providing an individual with a bed to sleep in.

Insofar as housing instability is linked to, or the result of, other symptoms of economic hardship, the more comprehensive of a strategy that is put forward, the more effective it will be.

In this regard, New Community Corporation has an edge in its ability to create impactful projects and programs. It has the infrastructure in place to provide supportive services such as childcare and financial coaching, even as the primary focus of an individual's interaction with New Community might be through Better Life or Harmony House.

Going forward, any additional projects created at the nexus of health and housing will be able to draw on New Community's recent experience of developing supportive housing and on its long history of creating holistic models of care.





# EDUCATION & WORKFORCE DEVELOPMENT

***New Community Corporation provides educational services to individuals of all ages.***

## **New Community Career & Technical Institute**

NCCTI is an accredited post-secondary career and technical school that awards students nationally recognized credentials.



## **Community Hills Early Learning Center**

CHELC provides quality care in a rich learning environment for infants through pre-kindergarten located on Irvine Turner Boulevard in Newark.

## **Harmony House Early Learning Center**

HHELC provides child care and early education for children ages 3 months to 5 years old. It is located on South Orange Avenue in Newark.

## **Adult Learning Center**

Classes are available to students ages 16 and older in a variety of areas including English for Speakers of Other Languages and High School Equivalency.



## **Youth Services**

The Youth Services Department offers after-school programs for students that enhance learning and allow for exploration; enrichment programs; fun special events; and summer camp.



# FINANCIAL SERVICES & EQUITY

The New Community Federal Credit Union (NCFCU) is a Community Development Financial Institution. It is a low-income designated community development credit union (CDCU) founded with the specific mission of serving low- to moderate-income and minority communities beyond the reach of banks and mainstream credit unions.

As a CDCU, it specializes in serving populations generally considered the hardest to reach, including low-income wage earners, recent immigrants and people with disabilities. NCFCU provides members a fee-free ATM, where members have access to cash 24/7, 365 days a year in a safe and convenient environment with fraud alert, if their card is compromised.

NCFCU provides a variety of services at little to no cost, including:

- Money Orders
- Wire Transfers
- Same Day ACH
- Cashier's Checks
- Online Statements
- Mobile Banking
- Bill Pay
- First Time Home Buyer Education
- Post Home Purchase Counseling
- Financial Counseling



New Community's Financial Opportunity Center (FOC) is a career and personal finance service center that helps low- to moderate-income job seekers build smart money habits. The FOC is staffed by three employees: a Financial Coach, a Job Developer/Employment Coach and an Income Support Specialist.

The Job Developer/Employment Coach helps clients access employment opportunities by reworking or writing resumes, improving interview skills and developing connections to local employers. The Financial Coach helps job seekers create a budget and improve credit scores and connects clients to saving or credit building programs that increase financial capability. The Income Support Specialist provides supportive services for students that need transportation, childcare and a host of other supportive services that are available.



## EXTENDED CARE



New Community Extended Care Facility is committed to providing the highest quality of nursing care 24 hours a day, seven days a week. It has a team of experienced professionals who provide around-the-clock nursing care to all residents, including those in advanced stages of illness.

Extended Care is a 180-bed skilled nursing facility as well as a short-term subacute rehabilitation facility, with a dedicated 30-bed subacute unit.



The team consists of board-certified attending physicians plus an interdisciplinary team, including nursing, rehabilitation, social services, dietary and recreation activities.

Extended Care also offers hospice and respite care, as well as specialized services for dementia and Alzheimer's patients.



# NEW COMMUNITY



For more information, contact

**Michelle Lang**

Director of Communications

New Community Corporation

233 West Market Street

Newark, New Jersey 07103

Email: [mlang@newcommunity.org](mailto:mlang@newcommunity.org)

Office: 973-497-4413 | Cell: 973-666-6944

Web: [www.newcommunity.org](http://www.newcommunity.org)



VISION • DIGNITY • ACHIEVEMENT



# NEW COMMUNITY

233 WEST MARKET STREET  
NEWARK, NJ 07103  
973.623.2800  
NEWCOMMUNITY.ORG



VISION • DIGNITY • ACHIEVEMENT